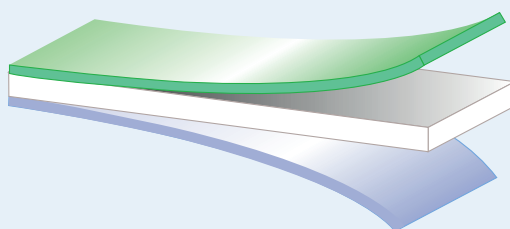


# Rayoface™ WTT

## Technical Data Sheet

**WTT - High Performance, Matt Coated White, Biaxially Oriented Polypropylene Film for Facestock Applications.**



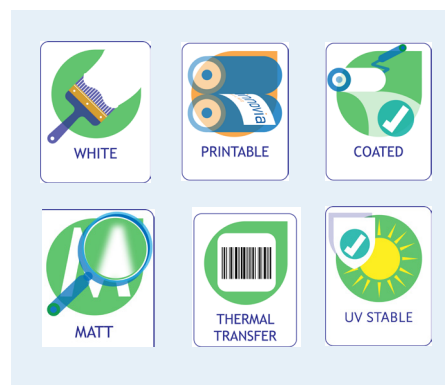
- Proprietary Matt Print Coating
- Solid White Pigmented OPP Core
- Corona Treated Polyolefin Layer

### Features

- Dedicated print receptive top coating for enhanced printability and smudge resistance
- Matt surface for reliable bar code readability
- Reverse side corona treated
- Excellent whiteness
- High opacity
- UV stabilised for extended outdoor use
- Non cavitated for robust removal during container recycling
- High stiffness for conversion and automatic dispensing
- Balanced biaxial orientation for superior die cutting
- Suitable for BS5609 applications.

### Printability

**Rayoface™ WTT** has a proprietary paper-like top coating and can be printed by traditional printing methods using a wide variety of different inks. For variable information printing, Rayoface™ WTT can be printed by thermal transfer, dot matrix and also inkjet marking giving smudge proof results. However, exact ink and ribbon systems should be recommended by your supplier.



### Technical Properties (Typical Values)

Property	Test Method	Test Conditions	Units	WTT
Thickness	Innovia Films test		micron	92
			gauge	360
Yield	Innovia Films test		m <sup>2</sup> /kg	11.0
			in <sup>2</sup> /lb	7700
			g/m <sup>2</sup>	90.9
Optical Opacity	Innovia Films test	45°	%	90
Tensile strength	ASTM D 882	Strain rate 50%/min	MN/m <sup>2</sup> MD	180
			TD	170
			kpsi MD	26.1
			TD	24.6
Elongation at break	ASTM D 882	Strain rate 50%/min	% MD	110
			TD	120
Elasticity modulus (1% secant)	ASTM D 882	Strain rate 10%/min	MN/m <sup>2</sup> MD	2000
			TD	1900
			kpsi MD	290
			TD	276
Dimensional stability	Innovia Films test	60 secs at 100°C (212°F)	% MD	7.0
			TD	1.0
UV resistance	ASTM G154	Continuous Dry Exposure: 0.84W/m <sup>2</sup> @ 340nm, 50°C/122°F, 50%RH		> 3000hrs
		Dry: Wet Cycle Exposure: 4 hrs @ 0.84W/m <sup>2</sup> @ 340nm, 50°C/122°F, 50%RH 4 hrs @ 50°C/122°F, 100%RH		> 3000hrs
Outdoor durability	Vertical Applications*	Central Europe		4 Yrs

\*Unconverted film

MD Machine Direction TD Transverse Direction

All properties are tested under standard laboratory conditions: 23 ± 2°C, 50 ± 5% RH, (73 ± 4°F, 50 ± 5% RH), unless otherwise stated. Where relevant, tests are based on international testing standards.

Rayoface™ WTT - 1 of 2 - 0321

# Rayoface™ WTT

## Technical Data Sheet

### Conversion

The balanced biaxial orientation of Rayoface™ WTT results in excellent die cutting performance, enhancing label edge appearance and prolonging die life. The high machine direction stiffness and tensile strength produces excellent matrix stripping and superior high speed label dispensing and easy hand application of large format labels.

### Reel Specifications

#### Nominal Reel Diameters

Film	Core Size/(mm)	Approx Outside Dia/(mm)	Length/(metres)
WTT92	153	873	6000

Film	Core Size/(in)	Approx Outside Dia/(in)	Length/(feet)
WTT360	6	34.3	19700

Alternative reel lengths/core sizes are available subject to negotiation.

The print coating is available on either the inner or outer surface of Rayoface™ WTT

### Film Storage and Handling

Care should be taken to protect reels of film from storage temperatures above 30°C (86°F) and localised sources of heat above 45°C (113°F). The reels should remain in the protective coverings supplied until ready for use on converting machinery. Converted reels, in both master and slit reel form should be similarly protected at all times. Rayoface™ WTT is suitable for use for 6 months from the date of delivery and stocks should be used in rotation. Films should be allowed to reach operating room temperatures for 24 hours before use.

### Food Contact

Rayoface™ WTT does not comply with either EU or US legislation for direct contact with food. For specific enquires please contact our Technical Services Department.

### Health & Safety Guidelines

For Health & Safety information, please refer to literature reference L190.

**Disclaimer:** Innovia Films or any of its affiliated companies (hereinafter 'Innovia Films') declines any liability with respect to the use made by any third party of the information contained herein. The information contained herein represents Innovia Films' best knowledge thereon without constituting any express or implied guarantee or warranty of any kind (including, but not limited to, the accuracy, the completeness or relevance of the data set out herein). Innovia Films is the sole owner or authorised user of the intellectual property rights relating to the information communicated. The information relating to the use of the products is given for information purposes only. No guarantee or warranty is provided that the product is adapted to the client's specific use. The client should perform his own tests to determine the suitability for a particular purpose. The final choice of use of a product remains the sole responsibility of the client.

Rayoface™ WTT – 2 of 2 – 0321

#### Regional Offices:

Europe (UK) Tel +44 16973 42281  
Americas (USA) Tel +1 800 424 6273  
Asia-Pacific (Aus) Tel +61 3 9303 0600

[www.innoviafilms.com](http://www.innoviafilms.com)  
email: [labels@innoviafilms.com](mailto:labels@innoviafilms.com)  
™ Trademark of Innovia Films

